

# Hybrid PSU – Fan Shroud & Airflow Improvement

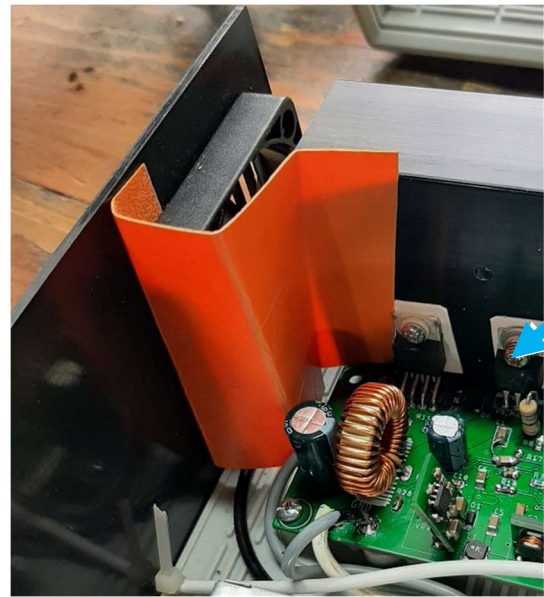
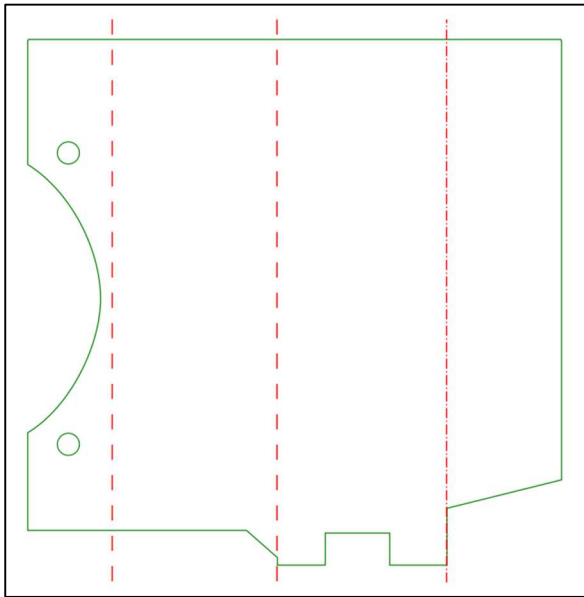
Feb 2021

To improve heatsink cooling, make a shroud to go between the back panel and the edge of the heatsink.

The template is in shroud.svg

I used a thin plastic cutting mat sourced from Aldi.

The edge of the plastic tucks in beside the LM2679.



Also obstruct the vents in the top and bottom of the case, immediately adjacent to the fan. While more elegant solutions are possible, I simply covered the vents with packaging tape.

