

Installing the USB Serial Port Device Driver

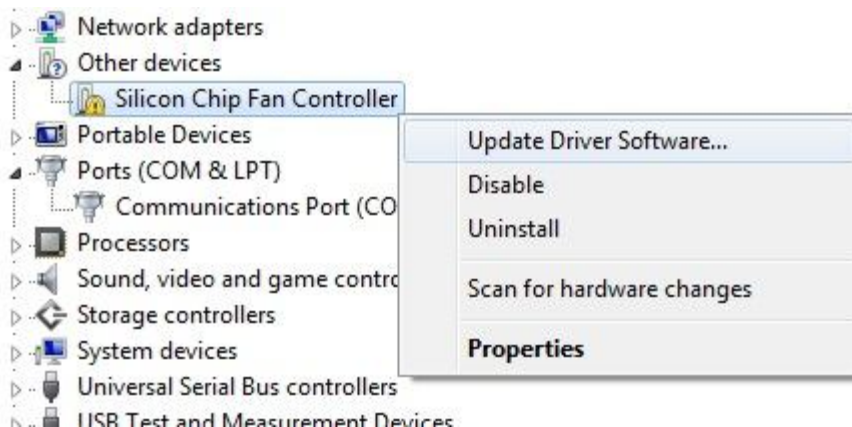
Geoff Graham (<http://geoffg.net>)

This device driver will work with all popular versions of Windows (XP, Vista and Windows 7) in both 32 and 64 bit modes. See the notes below for Windows 8.

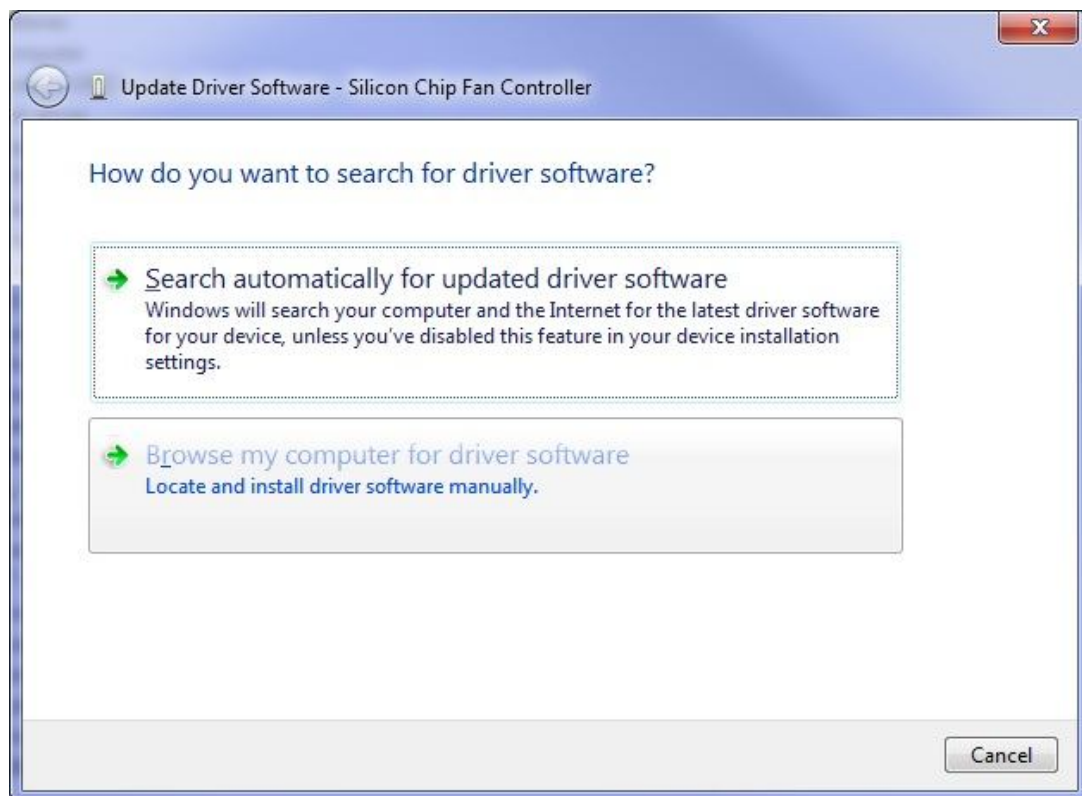
Download the driver and unzip the files into a temporary folder. The method of installing the software varies between versions of Windows but essentially, when you plug your device into an USB port the operating system will prompt for a driver. You should then point it to the temporary folder and install from there.

If, for some reason, you are not prompted to install the driver you can navigate to Device Manager and you should see an entry under Other Devices named after the device that you have plugged in (the example below is for the Silicon Chip Fan Controller).

Right click on the entry and select Update Driver Software.



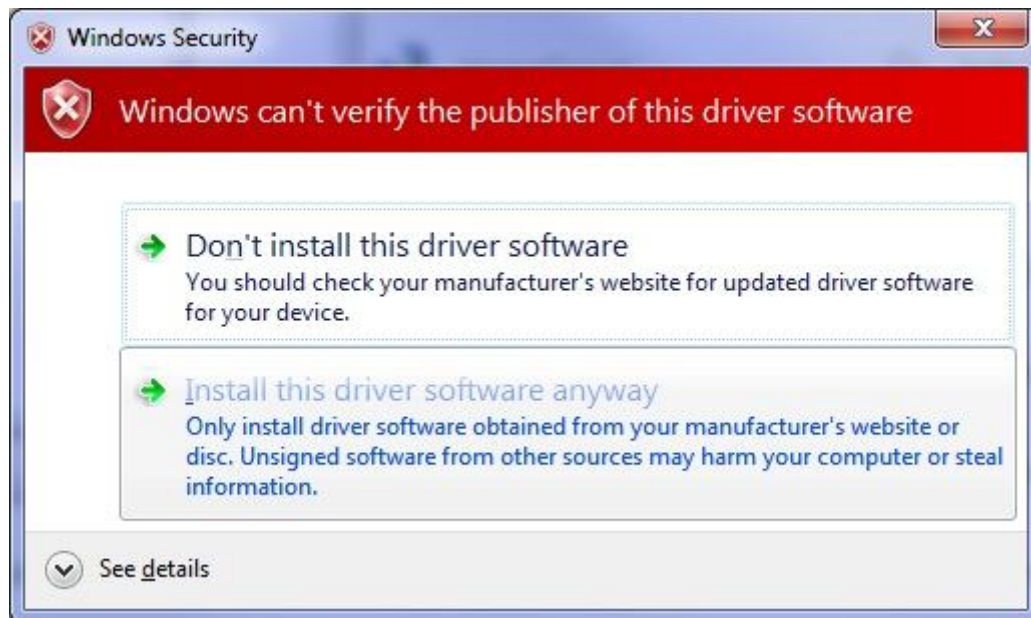
Select “Browse my computer for driver software”.



Select the location of the files that you have unzipped:



Select “Install this driver software anyway”:



After processing you should receive confirmation:



After you have successfully installed the driver you should see the device listed in Device Manager under Ports (COM and LPT) as “Communications Port - Silicon Chip USB Serial Port”. Take note of the COM port number allocated by the operating system, you will need this when configuring your terminal emulator.



Windows 8

Apparently the driver does not install correctly in Windows 8 unless the operating system is instructed to install "uncertified" drivers. This procedure is documented in this thread on the Back Shed forum: http://www.thebackshed.com/forum/forum_posts.asp?TID=5313&PN=1

Tera Term Setup

The USB Serial Port Device Driver creates a virtual serial port over USB so that you can communicate with it from a Windows, Linux or Macintosh computer using nothing more than the USB port.

The communications protocol used is the CDC (Communication Device Class) protocol and there is native support for this in Linux (the cdc-acm driver) and Apple OS/X. Macintosh users can refer to the document "Using Serial Over USB on the Macintosh" on <http://geoffg.net/maximite.html>. The rest of this document assumes that you are using a computer running Windows XP, Vista or 7.

To communicate with your device over this virtual serial port you need to use a terminal emulator. This is a program that emulates the old fashioned VT100 terminal over a serial communications link. There are quite a few free emulators that you can use but Tera Term is recommended.

1. You should download Tera Term from <http://en.sourceforge.jp/projects/ttssh2/releases/> and install it. These instructions are based on version 4.71.
2. Make sure that the USB cable is plugged into your PC and that you know the COM number.
3. When you run Tera Term for the first time you will get a dialog box asking you to select the type of connection. Select serial and select the correct COM number.
4. You should then be in communication.